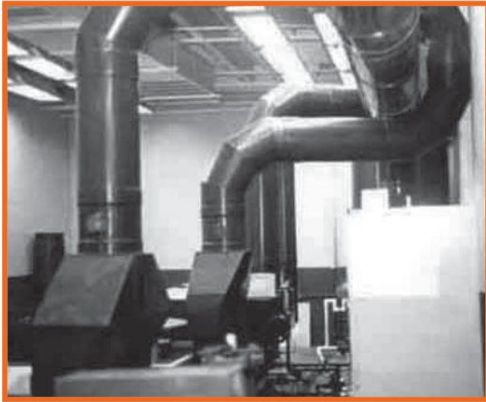




Instaduct® CPVC Ventilation Duct Pipe



CPVC Instaduct® is available in sizes 6" thru to 24" Diameter for Institutional and Industrial hot fume service. This duct provides superior resistance to corrosion and chemical attack. Its lightweight and high-strength characteristics allow for easy, low-cost installation in a wide range of applications such as waste water treatment facilities, metal finishing and plating operations, anodizing and laboratory uses. Conforms to ULC S102.2.

FLAMMABILITY PROPERTIES	CPVC CORZAN®	ASTM TEST METHOD
Average Time of Burning (sec.)	<5	D635
Average Extent of Burning (mm)	<10	
Flame Spread Index	<10	E162
Flame Spread	>25	E84, ULC S102.2
Flash Ignition	900°F	
Smoke Developed	>50	
Limited Oxygen Index (LOI 60)	Self-Extinguishing	D2863
Burning Rate, in./min.	Self-Extinguishing	
Softening Starts, approx. °F	295	
Material becomes viscous, °F	395	
Material carbonizes, °F	450	

Applications:

- Plating
- Corrosive fume extraction
- Chemical blending
- Automotive manufacturing
- Municipal water treatment
- Metal Finishing
- Anodizing
- Laboratories

Features:

- Resists chemical attack replacement and downtime.
- Meets ASTM material standard D-1784
- Safely withstands temperatures of up to 212°F
- Is extruded to IPS dimensions.
- Is lightweight allowing easy, low-cost installation.
- Material has excellent flame resistant
- Is readily available with fabricated fittings of all configurations.

DUCT PART NUMBER	DUCT COUPLING PART NUMBER	DUCT SIZE	AVG. O.D. (IN)	AVG. O.D. TOL.	OUT OF ROUND TOL.*	MIN. WALL (IN)	AVG. WALL (IN)	MAX. WALL (IN)	NOMINAL WT. PER FT.(LB)
020118	02011018	6"	6.625	±.020	±.050	0.172	0.187	0.202	2.555
020119	02011019	8"	8.625	±.020	±.075	0.172	0.187	0.202	3.349
020120	02011020	10"	10.750	±.020	±.075	0.172	0.187	0.202	4.192
020122	02011022	12"	12.750	±.020	±.075	0.172	0.187	0.202	4.986
020124	02011024	14"	14.000	±.030	±.075	0.172	0.187	0.202	5.485
020126	02011026	16"	16.000	±.030	±.075	0.172	0.187	0.202	6.273
020128	02011028	18"	18.000	±.040	±.080	0.172	0.187	0.202	7.580
020130	02011030	20"	20.000	±.070	±.140	0.199	0.199	0.239	9.146
020134	02011034	24"	24.000	±.090	±.180	0.230	0.250	0.270	12.536

Notes:

- Available in 10 ft and 20ft lengths
- Product supplied with plain end.
- Fabricated fittings available upon request.

