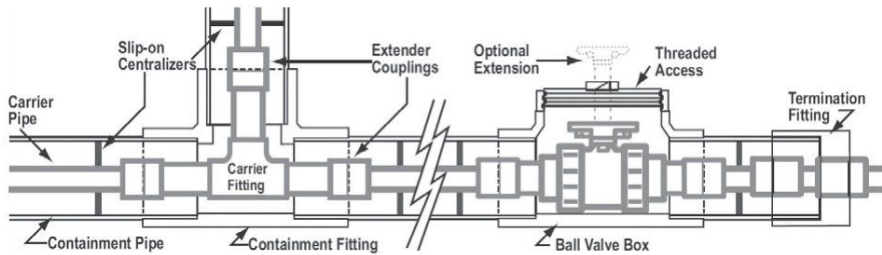


Spears Double Containment Systems



Double Containment Made Simple! Simplified Design, Easier Installation, Lower Overall Cost

Spears Double Containment Systems are engineered for ease of installation and lower associated installation costs.

Use anywhere secondary containment is required for potential loss of fluid media in main carrier system. Complete systems include all necessary components - carrier pipe, containment pipe, centralizer brackets, valve and valve boxes, plus a full assortment of simplified double containment configurations including elbows, tees, closure and termination fittings. Carrier fittings are equipped with special extender couplings for connection to carrier pipe. Simple, slip-on centralizer brackets used on the carrier pipe support this assembly inside the containment pipe. This design allows the carrier fitting to "float" within the containment fitting, allowing ease of movement for installation while reducing problems associated with thermal expansion and contraction during operation.

Full Size Range for Virtually Any Application

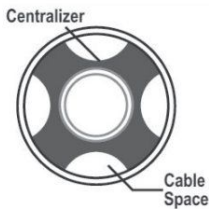
Carrier x Containment Sizes 1/2x2, 3/4x3, 1x3, 1-1/2x4, 2x4, 3x6, 4x8, 6x10, 8x12, plus additional sizes on request.

PVC & CPVC Carrier/Containment Combination Configured to Order

Select any combination of carrier and containment pipe/fittings from PVC Sch 40, PVC Clear Sch 40, PVC Sch 80, CPVC Sch 80.

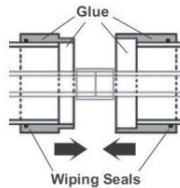
Full Service Pressure Rating

Spears® Double Containment carrier pipe and fittings are suitable for full Sch 40 or Sch 80 pressure applications, except where limited by addition of valves, saddles and other system components with lower pressure ratings. Secondary containment rated at 10 psi unless otherwise specified.



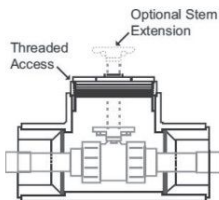
Easy, Slip-on Centralizer Brackets

Simple, slip-on design centralizes carrier pipe and fittings in containment pipe. Allows free movement of components and provides necessary space for routing of leak detection cables.



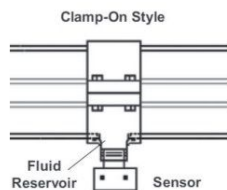
Quick Glue-and-Connect Closure Fittings

Special fittings designed for final closure of containment pipe features gluwiping seal to improve distribution of solvent cement during assembly. After assembly of carrier connection, simply solvent cement pipe and closure fitting and slide assembly together. Wiping seals assures spread of cement for proper bond.



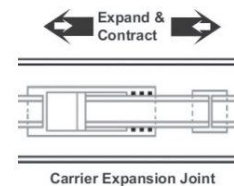
In-Line Valve Boxes

Spears® unique containment enclosure of Valves provides easy access while allowing for addition of valve operation extensions or mechanical actuation. Special "Tee-style" configuration easily connects to containment system, minimizes space requirements and strengthens overall system integrity.



Sensor Saddles

Easy-to-install threaded saddle tees can be easily located anywhere along containment pipe for mounting user-supplied leak detection sensors. Saddle tee forms low-point reservoir for detection of any fluid in the containment system. Select either Clamp-on style (for up to 6" pipe) or Glue-on style (for up to 8" and larger pipe).



Carrier & Containment Expansion Joints

Temperature differentials can produce significant expansion and contraction changes between carrier pipe and containment pipe. These forces can severely damage system integrity. In addition to Spears® floating carrier design, Spears® in-line expansion joints can be used on either carrier or containment runs to compensate for expansion and contraction changes.

Double Containment Systems

+GF+ Double See Vinyl Double Containment Piping System



Applications

- water and wastewater treatment
- chemical processing
- delivery and dosing
- microelectronics
- metal plating and surface finishing
- life sciences applications

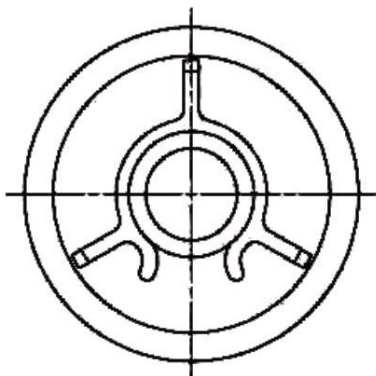
Double-See is fast and easy to install, and is available with a complete selection of pipe, fittings, leak detection and access tees, closure couplings, and termination fittings. Additionally, an innovative "valve-in-valve" design is offered which allows full containment pressure rating.

Double-See is available in PVC and CPVC; either material may be primary or secondary (PVC×PVC, CPVC×PVC, CPVC×CPVC) with Clear PVC always being an option for the containment pipe. System size options range from 1/2"×2" to 6"×10" meeting virtually any application requirement.

Installation versatility allows simultaneous joining throughout a system or in combination with patented closure couplings which enable practical compliance with the ASME B31.3

Benefits

- Installation is fast and easy
- Revolutionary closure coupling design for practical compliance with ASME B31.3
- Innovative centralizer design for thermal expansion compensation
- Flexible choice of PVC, CPVC, and Clear PVC
- Pipe cut-length guidance system for easy installation
- Factory assembled and 100% tested fittings
- Extensive standard part selection
- Customer fabrications and pipe spooling available
- Improves safety by eliminating chemical interaction with employees
- Double-See can be applied above or below ground
- GF quality, field support, and factory engineering



cross section



PRODUCTS AVAILABLE



PIPES



ELBOWS



TEES



SUMP



CLOSURE COUPLINGS



TERMINATIONS



VALVES



LEAK DETECTION



ACCESSORIES