

AODD Pumps

Finish Thompson - FTI Air Air-Operated Double Diaphragm Pumps

FTI Air's line of AODD pumps offer outstanding versatility in a myriad of applications. Designed and manufactured to be incredibly rugged, easy to operate and maintain, they are built to survive the harshest applications and installation locations. All backed by an incredible five year warranty.

Features:

- Easy to install
- Runs on compressed air
- No electricity required
- Installation versatility
- Flooded suction, suction lift or can be submerged
- Portable to allow use in multiple locations
- Self-priming for applications where the liquid is below the pump
- Pump solids and abrasives
- Can be deadheaded without damage
- Economical compared to other positive displacement technologies



AODD Material Specifications*

Wetted Materials: Polypropylene, PVDF, Aluminum, Stainless Steel

Diaphragm Materials: Neoprene, Santoprene, FKM, EPDM, PTFE, Hytrel®, polyurethane

Ball Materials: Neoprene, Buna, EPDM, FKM, Santoprene, PTFE, Stainless Steel

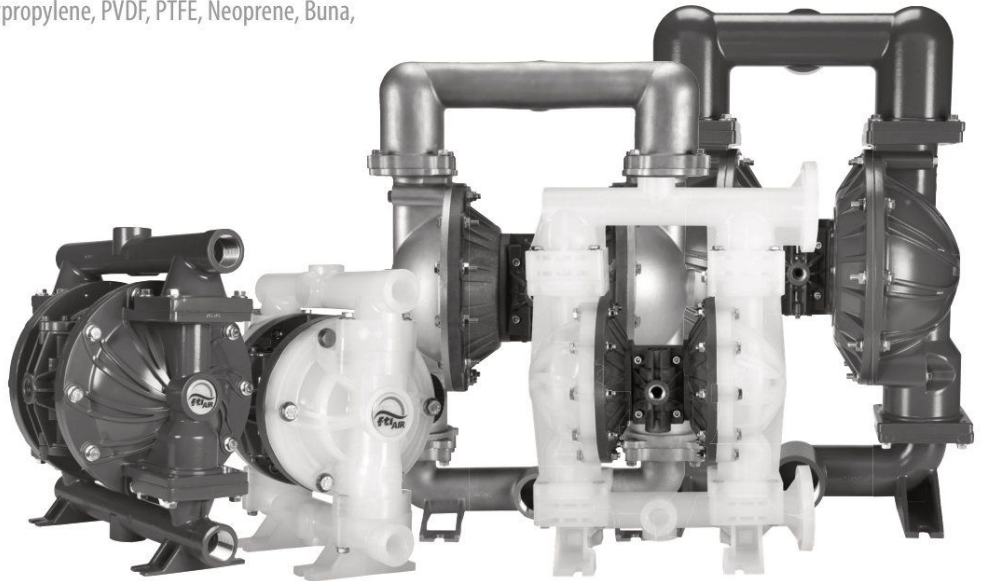
Seat Materials: Aluminum, Stainless Steel, Polypropylene, PVDF, PTFE, Neoprene, Buna,

EPDM, FKM, Santoprene, Hytrel®, Polyurathane

*Varies by size and wetted material selection

AODD Applications

- Plating and finishing
- Chemical/petrochemical
- Mining
- Paint/ink/coatings
- Ceramic slip/glaze
- Industrial/municipal wastewater treatment
- Pulp & paper



Model	Port Size (in.)	Port Types	Max Flow (GPM)	Construction Materials
FT025	1/4 x 1/4	NPT or BSPT	5.8	Polypro, PVDF & Conductive Polypro
FT05	1/2 x 1/2	NPT or BSPT	19-20	Polypro, PVDF, Conductive Polypro, Aluminum & 316SS
FT10	1 x 1	NPT, BSPT or Flanges	49-56	Polypro, PVDF, Aluminum & 316SS
FT15Z	1-1/2 x 1-1/2	NPT, BSPT or Flanges	123-133	Polypro, PVDF, Aluminum & 316SS
FT20	2 x 2	NPT, BSPT or Flanges	154-156	Polypro, PVDF, Aluminum & 316SS
FT30	3 x 3	NPT, BSPT or Flanges	240	Aluminum & 316SS