

Mixers & Agitators

DynaMix Mixers & Agitators

MMX Series: Drum Mixers

50 - 250 Gal



Drum Lid Mount



Bung Mount



a



b

Universal Drum Mount (a - open, b - closed)

ITM Series: Tote Mixers

200 - 600 Gal



Plastic Tote Mount



Stainless Steel Tote Mount

DMX Series: Portable Mixers

100 - 3,000 Gal



Side Entry Mixers

DMX



NMX



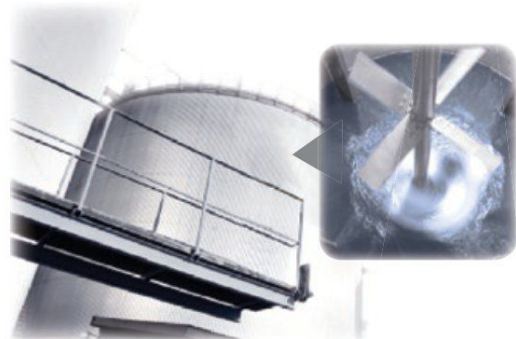
GMX Series: Medium Tanks

2,000 - 10,000 Gal



NMX Series: Large Industrial Tanks

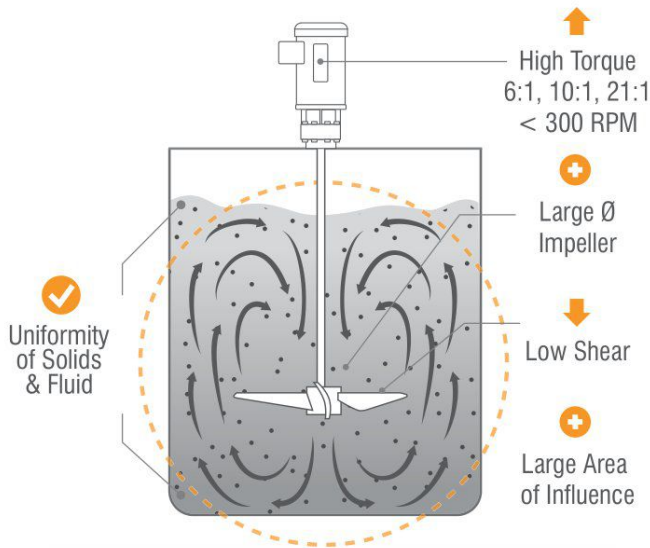
2,500 - 100,000 Gal



7

TANKS & ACCESSORIES

Mixers & Agitators



Consistent Product Quality Control

Axial flow pattern achieves uniformity by fully involving the entire tank

A High Speed Mixer

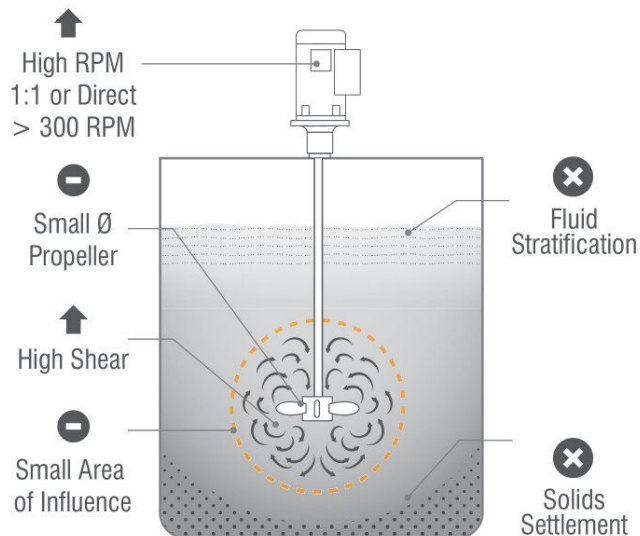
Will not fully involve your tank.

▲ The Problem:

Using a high RPM motor with a small propeller introduces high shear - and more importantly, it only creates a small area of influence.

▲ The Result:

Poor product quality control with an increased risk of product damage, and a mixture that does not reach uniformity.



Little / No Product Quality Control

Localized agitation can damage product while failing to address suspension issues

This is why we ask for:

- Specific Gravity
- Product Viscosity
- Particle Size
- Settling Rate
- Tank Configuration



This information, combined with our mixer engineering, allows us to guarantee your mixing time to uniformity.

▲ The Dynamix Approach:

After defining your mixing objective, we balance the power and pumping requirements of a specific impeller with the torque required to achieve uniformity. Your drive may cost a little more, but the increase in product quality control and savings in process time cover this cost immediately.

By achieving true axial flow mixing, we can guarantee the time to uniformity. This is our process guarantee – **Our Solution Assurance.**

The Result = **Uniformity of Solids & Fluid**